



**HAL**  
open science

## **Controlling or rewilding the river: local expressions of a tension between revitalization and risk control, case study of the Vistre plain**

Ghita Serrhini-Naji, Juliette Cerceau, Sylvain Olivier, Marc Vinches, Raphael Mathevet

### ► **To cite this version:**

Ghita Serrhini-Naji, Juliette Cerceau, Sylvain Olivier, Marc Vinches, Raphael Mathevet. Controlling or rewilding the river: local expressions of a tension between revitalization and risk control, case study of the Vistre plain. AISH 2022 - XIème Assemblée Scientifique de l'Association Internationale des Sciences Hydrologiques, May 2022, Montpellier, France. 2022. hal-03702932

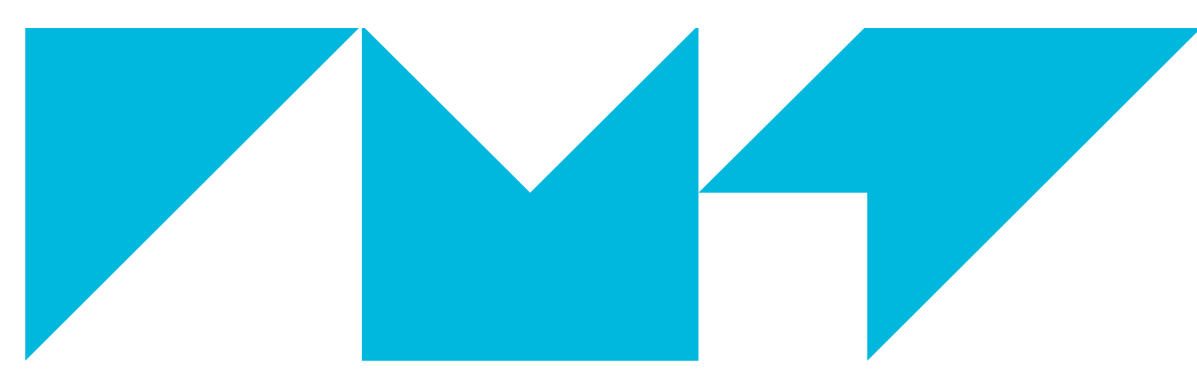
**HAL Id: hal-03702932**

**<https://hal.mines-ales.fr/hal-03702932>**

Submitted on 29 Jun 2022

**HAL** is a multi-disciplinary open access archive for the deposit and dissemination of scientific research documents, whether they are published or not. The documents may come from teaching and research institutions in France or abroad, or from public or private research centers.

L'archive ouverte pluridisciplinaire **HAL**, est destinée au dépôt et à la diffusion de documents scientifiques de niveau recherche, publiés ou non, émanant des établissements d'enseignement et de recherche français ou étrangers, des laboratoires publics ou privés.



IMT Mines Alès  
École Mines-Télécom



# Controlling or rewilding the river: local expressions of a tension between revitalization and risk control

## Case study of the Vistre plain, France



### Authors

Ghita SERRHINI NAJI<sup>1</sup>

Juliette CERCEAU<sup>1</sup>

Sylvain OLIVIER<sup>2</sup>

Marc VINCHES<sup>1</sup>

Raphaël MATHEVET<sup>3</sup>

<sup>1</sup> Hydrosociences Montpellier, Univ Montpellier, IMT Mines Ales, IRD, CNRS, Ales, France

<sup>2</sup> UPR CHROME, Université de Nîmes

<sup>3</sup> CEFE, University Montpellier, CNRS, EPHE, IRD, 34090 Montpellier, France

✉ ghita.serrhini-naji@mines-ales.fr

### Partners



Mines Ales is certified by

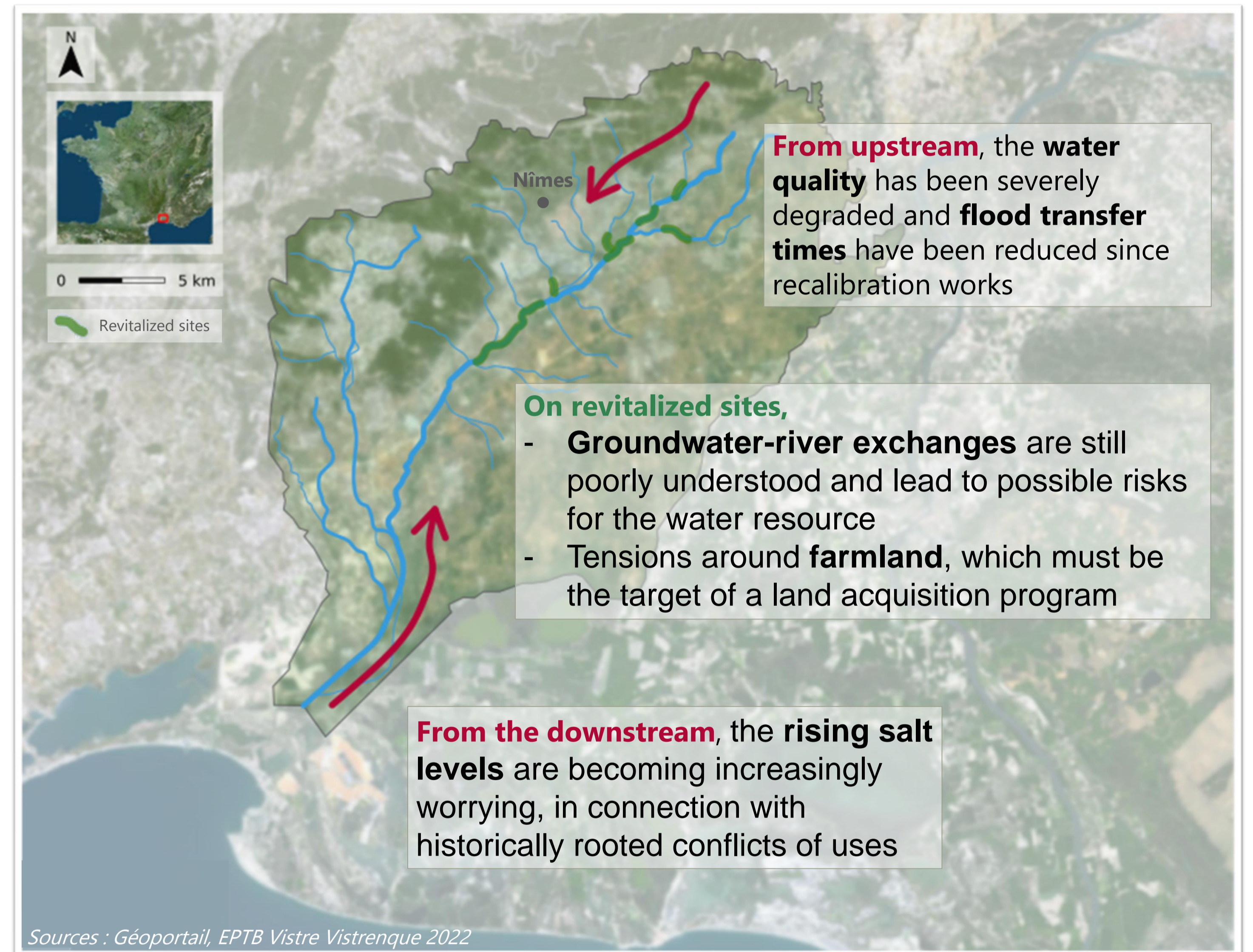


Recreation of meanders in the village of Milhaud, Gard Department. Credits : EPTB Vistre Vistrenque, 2016

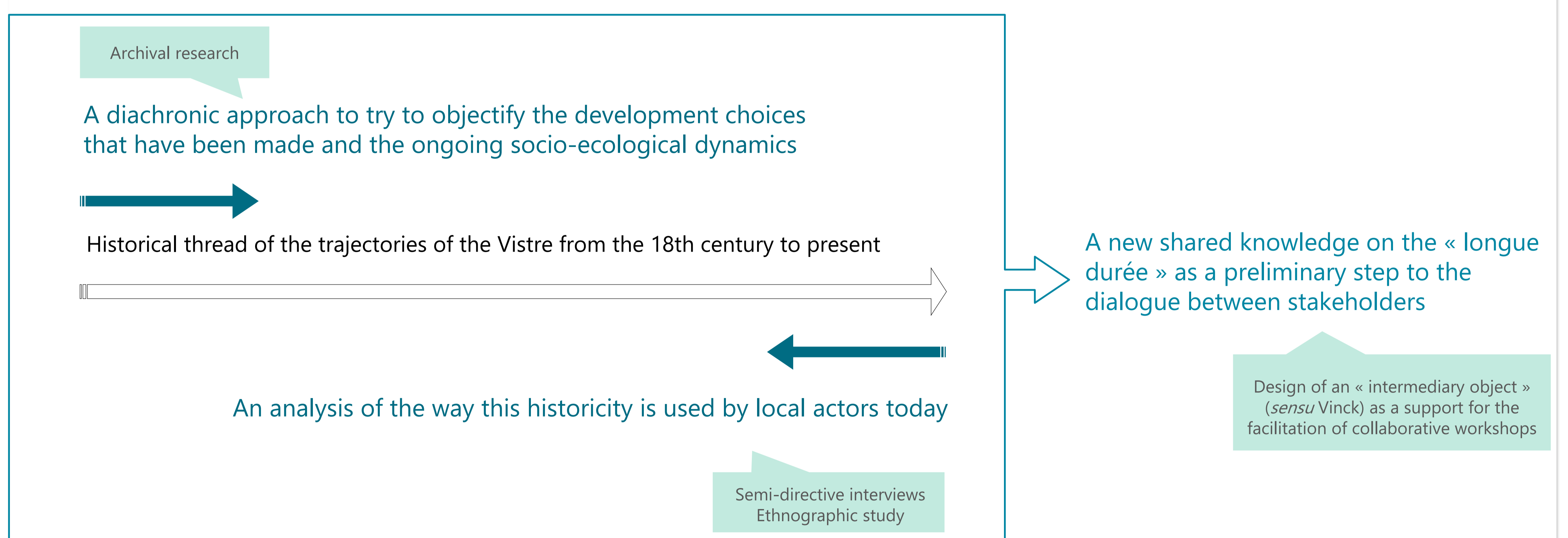
Located in the south of France, in the department of Gard, between Costières and Garrigues, the Vistre is a Mediterranean river that rises north of the city of Nîmes in the town of Bezouce before joining the sea via the Rhone to Sète navigation canal.

This coastal river has known the usual trajectory of French rivers since the end of the Second World War: it has been dug and canalized. By becoming a straight canal for the discharge of wastewater and floods that are particularly frequent and destructive in this region, it has lost most of its ecological functions. For the past twenty years, this river has been the object of an extensive revitalization project. In the long term, the aim is to enable the river to recover its hydro-geomorphological dynamics, which is beneficial to biodiversity, by creating meanders and deploying ecological engineering techniques along its entire course. These actions result in a kind of rewilding of some riparian areas and question the modalities of articulation of a restoration ecology based on the free evolution of the environments and of a genuinely integrated management on the catchment scale.

Could the **territorial interdependencies**, currently at the origin of **tensions**, be the source of **new social and ecological solidarities** ?



A **back and forth** historical approach that feeds an **action research** project



Can the revitalization of the Vistre **reinvent commons** for resilient water management through the transformation of hydrosociological interdependencies?

Existence of extensive communal goods until the XVIII<sup>th</sup> century (pastures, irrigation systems and management of water levels)



Expansion of the Ostromian paradigm (common pool resources) and consideration of potential new commons (water and landscape as resources)

### References

- Haberl, H., Winiwarter, V., Andersson, K. *et al.* From LTER to LTSE: Conceptualizing the socio-economic dimension of long-term socio-ecological research. *Ecology and Society* 11 (2005)
- Lusson, M. Faire ou laisser-faire. Imiter une rivière : la récréation morphologique du Vistre. *Techniques & Culture* 73, 44-57 (2020)
- Mathevet, R., Bousquet, F., Larrère, C. *et al.* Environmental Stewardship and Ecological Solidarity: Rethinking Social-Ecological Interdependency and Responsibility. *J Agric Environ Ethics* 31, 605-623 (2018)
- Locher F., Historicizing Elinor Ostrom: Urban Politics, International Development and Expertise in the U.S. Context (1970-1990). *Theoretical inquiries* 19 (2018)
- Vinck D. Les objets intermédiaires dans les réseaux de coopération scientifique. Contribution à la prise en compte des objets dans les dynamiques sociales. *Revue française de sociologie* 40-2, 385-414 (1999)